

**Qualitative, cost-effective,  
and sustainable production**

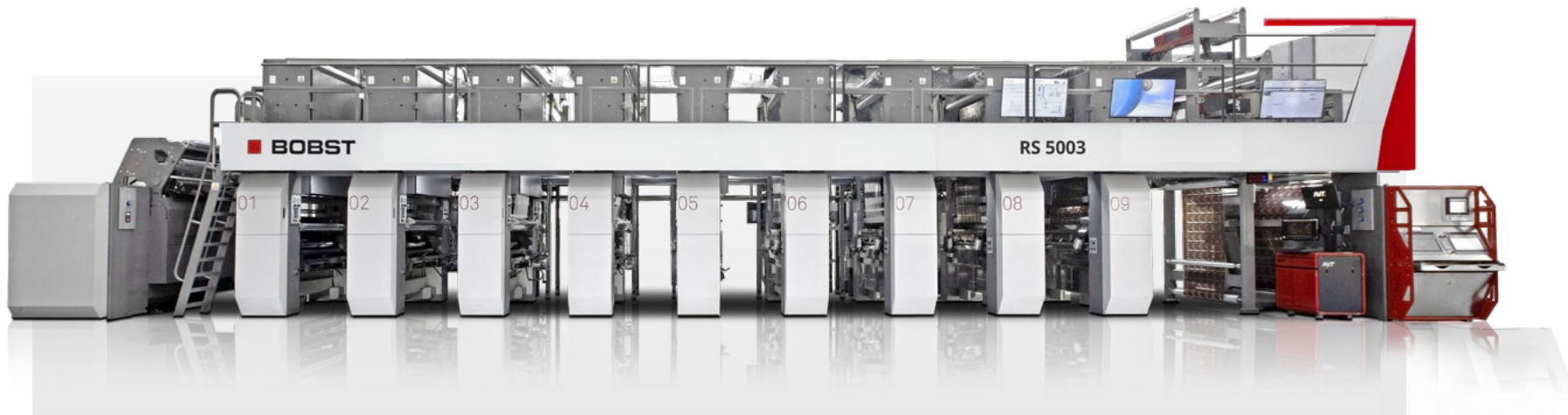


**GRAVURE PRINTING**

**RS 5003 platform**

# Advancing sustainability

The solutions in the **RS 5003** platform deliver superior performance on a variety of flexible materials, including the new eco-friendly packaging substrates for the efficient production of short, medium and long runs of food, beverages and non-food flexible packaging applications. Easy to operate and fast to set-up and changeover, they feature BOBST unique solutions for sustainable operation with minimum waste for water-based or solvent-based ink printing applications.



**Superior quality**  
and consistent performance

Advanced sustainability  
and **cost savings**

**BOBST Connect Essential**, data  
and connectivity, **as standard**

## RS 5003 platform

- > At a glance
- > Packaging market
- > Benefits and features
  - > 1 - 3
  - > 4 - 5
- > Specifications
  - > Measurements
  - > Technical information
- > Related products
- > Services
  - > General services
  - > BOBST Connect

## REQUEST CONSULTING

 Print responsibly

Data is not binding.  
Non-contractual pictures.  
The manufacturer reserves  
the right to make  
modifications without notice.  
© BOBST SA 2023  
BUPC-RS5003-EN-062023

# Creating **value**

**BOBST innovations**  
are driven by customer  
and brand owner needs.

[> READ MORE](#)

## **Safety**

Food safety and brand protection are major requirements. Anti-counterfeiting and traceability are required across the entire supply chain.

## **Customization, versioning, personalization**

Packaging needs to reach all segments of society taking almost any shape and size across multiple job lengths across the globe.

## **Color control and brand image**

Color consistency and control across all substrates needs to be guaranteed for brands to look good across the globe.

## **Sustainability**

Packaging production needs to reduce its environmental carbon footprint – less waste across the entire supply chain. New and thinner substrates. Recycling and re-use are the new rules.

## **Faster time-to-market**

A growing number of products need to reach consumers faster. Product lifetime is shorter. From product design to the consumer experience, the supply chain has to be more agile.



## **RS 5003 platform**

- > At a glance
- > Packaging market
- > Benefits and features
  - > 1 - 3
  - > 4 - 5
- > Specifications
  - > Measurements
  - > Technical information
- > Related products
- > Services
  - > General services
  - > BOBST Connect

 Print responsibly

Data is not binding.  
Non-contractual pictures.  
The manufacturer reserves  
the right to make  
modifications without notice.  
© BOBST SA 2023  
BUPC-RS5003-EN-062023



### Perfect web handling

- Very accurate tension control from unwinder to rewinder with all substrates types, including new eco-friendly materials
- No wrinkle formation even with delicate and heat-sensitive substrates
- Best-in-class sensitivity for idle and chilled rollers engineered and manufactured in-house
- Closed circuit chilled roller system for the entire material thickness range



### Superior performance and print quality

- Trolley types to best fit given press configuration and minimize color matching time - service trolley and smart trolley
- Precise and uniform inking distribution. Inking solutions to best fit application requirements and use of local ink variety - motorized inking roller (MPI) or idle inking roller (HSM)
- TAPS system for fast and error-free pre-registration at the touch of a button
- Very fast register corrections at speed variations with Registron® register control system
- Enhanced viscosity control system with ink cooling device for outstanding stability of the printing process
- BOBST can supply and integrate the required auxiliary equipment



### Exclusive drying technology

- Unique Twin Flow dryer for higher efficiency drying
- Dual airflow technology - impingement and flotation
- Book type opening of the hoods for easy access to the dryer
- Ventilation fans driven by frequency converter
- Heat recovery system on each printing unit
- Corrosion-resistant components are ideal for water-based applications
- Availability of extended hoods for optimal drying of full white ink coverage, cold seal or special lacquer application at the end of the process

#### RS 5003 platform

- > At a glance
- > Packaging market
- > Benefits and features
  - > 1 - 3
  - > 4 - 5
- > Specifications
  - > Measurements
  - > Technical information
- > Related products
- > Services
  - > General services
  - > BOBST Connect

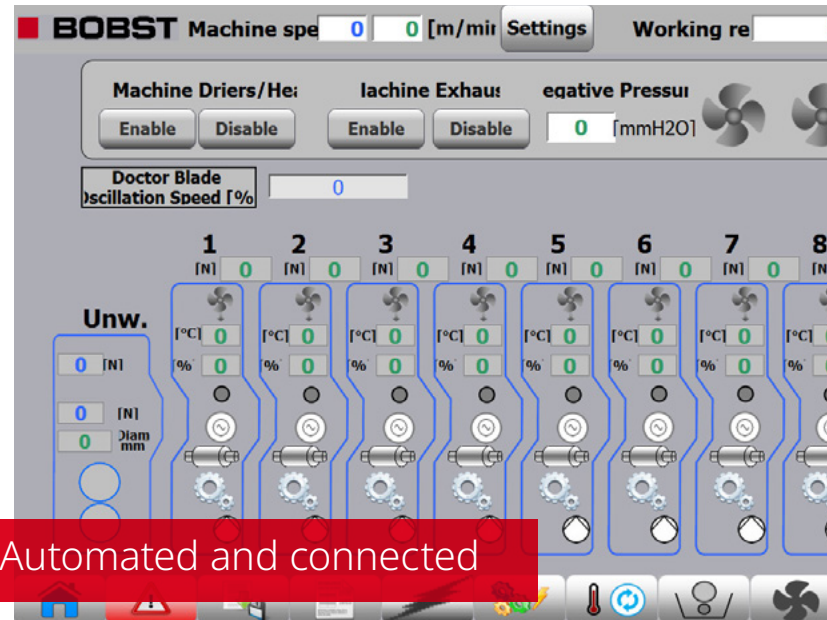


Data is not binding.  
Non-contractual pictures.  
The manufacturer reserves the right to make modifications without notice.  
© BOBST SA 2023  
BUPC-RS5003-EN-062023



### Operator-friendly design

- Machine in production with only two operators
- Inking roller automatic release for quick changeovers
- Toolless change of impression roller sleeve
- Doctor blade system with easy and quick setting
- Optimum accessibility to all machine sections for cleaning and maintenance
- Noise level in the pressroom down to 80 db(A)
- Full compliance with CE safety standards



### Automated and connected

- Exclusive automation features ensuring process repeatability and required productivity
- Energy improved efficiency
- New SPHERE Human Machine Interface enabling:
  - Digital logging of machine parameters for each produced reels
  - Downtime tracking and waste management
  - Maintenance programming

### RS 5003 platform

- > At a glance
- > Packaging market
- > Benefits and features
  - > 1 - 3
  - > 4 - 5
- > Specifications
  - > Measurements
  - > Technical information
- > Related products
- > Services
  - > General services
  - > BOBST Connect

Print responsibly

Data is not binding.  
Non-contractual pictures.  
The manufacturer reserves  
the right to make  
modifications without notice.  
© BOBST SA 2023  
BUPC-RS5003-EN-062023

### RS 5003 platform

- > At a glance
- > Packaging market
- > Benefits and features
  - > 1 - 3
  - > 4 - 5
- > Specifications
  - > Measurements
  - > Technical information
- > Related products
- > Services
  - > General services
  - > BOBST Connect



1	5.5 m	18 ft*
2	22 m	72 ft*
3	5.6 m	18.3 ft

\*Values may vary according to the configuration.

 Print responsibly

Data is not binding.  
Non-contractual pictures.  
The manufacturer reserves  
the right to make  
modifications without notice.  
© BOBST SA 2023  
BUPC-RS5003-EN-062023

### Materials handled

Substrates	Film, laminates, paper
Inks	Solvent-based, water-based

### Capability

Web width	1000 - 1200 - 1260 - 1300 mm	39.4 - 47.2 - 49.6 - 51.1 in
Printing cylinder repeat	400 to 1020 mm	15.8 to 40.2 in
Mechanical speed, max	450 m/min	1476 ft/min
Web tension	35 - 350 N	35 - 350 N
Standard dryer inside length	1.75 - 3.0 - 3.3 - 4.4 m	5.7- 9.8 - 10.8 - 14.4 ft
Heating system	Thermal oil, electric, steam	


### Products

Flexible packaging
--------------------

### RS 5003 platform

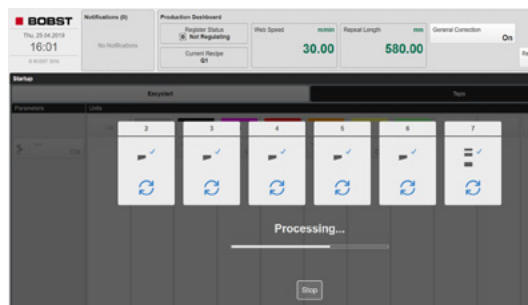
- > At a glance
- > Packaging market
- > Benefits and features
  - > 1 - 3
  - > 4 - 5
- > Specifications
  - > Measurements
  - > Technical information
- > Related products
- > Services
  - > General services
  - > BOBST Connect

**REQUEST  
CONSULTING**

 Print responsibly

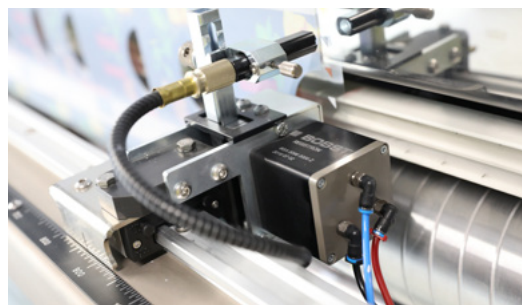
Data is not binding.  
Non-contractual pictures.  
The manufacturer reserves  
the right to make  
modifications without notice.  
© BOBST SA 2023  
BUPC-RS5003-EN-062023

## Related products



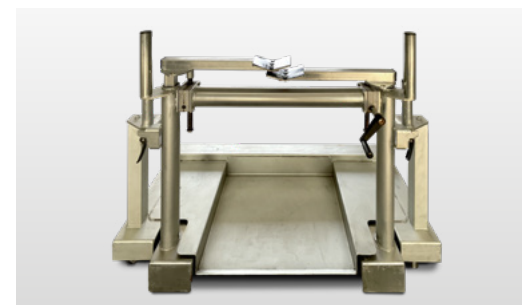
### TAPS

Fully automatic pre-register setting system. Perfect machine registration complete in a very short time at the touch of a button, with minimum start-up waste. Fast and simple operation regardless of the operator skill.



### Registron® register control system

Exceptionally precise and rapid print-to-print register control. Corrections are quickly and precisely done while machine downtime and waste are reduced to a minimum.



### RS 5003 platform

- > At a glance
- > Packaging market
- > Benefits and features
  - > 1 - 3
  - > 4 - 5
- > Specifications
  - > Measurements
  - > Technical information
- > Related products
- > Services
  - > General services
  - > BOBST Connect



### Service trolley

The trolley has been designed to make job changeover operations easier and faster, improving the operator's efficiency. It allows to move either the printing cylinder or the ink pan in and out of the print unit by means of a single, flexible device.



### Sphere

SPHERE, BOBST new Human Machine Interface (HMI), allows the operator to control and manage the machine operation by displaying in real time the status of the main production parameters, making it possible to modify the initial settings.

# Maintaining excellence

Expert services for all your equipment.  
Improve your processes, boost your productivity  
and enhance your expertise with a complete range  
of services from BOBST.



## Maintain your Investment

- Scheduled maintenance with BOBST certified technicians
- Preventative intervention, maximizing machine uptime
- Optimum performance over the equipment lifetime

[> WATCH VIDEO](#)

## Approved parts and logistics

- BOBST Original and Certified parts, and consumables
- Quality assurance, and extended maintenance intervals
- Worldwide distribution, and full availability where and when you need it

[> LEARN MORE](#)

## Machine upgrades

- Additional features, configured for your machine
- Enhanced functionality, connectivity and capability
- Future-proofing your investment, maintaining competitive advantage

[> LEARN MORE](#)

## RS 5003 platform

- > At a glance
- > Packaging market
- > Benefits and features
  - > 1 - 3
  - > 4 - 5
- > Specifications
  - > Measurements
  - > Technical information
- > Related products
- > Services
  - > General services
  - > BOBST Connect

 [Print responsibly](#)

Data is not binding.  
Non-contractual pictures.  
The manufacturer reserves  
the right to make  
modifications without notice.  
© BOBST SA 2023  
BUPC-RS5003-EN-062023

# **Digital age manufacturing** happening with BOBST Connect

BOBST Connect is an end-to-end, user-centric digital platform that enhances and increases your packaging productivity. It's designed to help you make the most of the data your machine generates, improving efficiency across your value chain.

As well as exceptional data insights, BOBST Connect helps to orchestrate and improve your whole production process, from your PDF to the finished product and quality report. It brings data and digital services together in one fully connected platform, with machine insights and expertise built in.

All of this is available to you as part of BOBST Connect Essential, the first subscription level that you receive when you purchase a new BOBST machine.



## **Performance analysis**

- Production insights, including interaction of OEE components
- Identify and eliminate performance gaps

## **Accurate reporting**

- Meaningful insights on OEE and downtime
- Accurately measure target speed and quality losses
- Trend analysis over time

## **Progress indicator**

- Highlights extensive production deviations
- Empowers timely interventions

## **Remote assistance**

- Priority access to technical specialists
- Video with Augmented Reality expert support based on real-time data
- Available 24/7 (optional)

## **Shift management**

- Optimize planning time
- Deliver overall resource efficiency

## **RS 5003 platform**

- > At a glance
- > Packaging market
- > Benefits and features
  - > 1 - 3
  - > 4 - 5
- > Specifications
  - > Measurements
  - > Technical information
- > Related products
- > Services
  - > General services
  - > BOBST Connect

 Print responsibly

Data is not binding.  
Non-contractual pictures.  
The manufacturer reserves  
the right to make  
modifications without notice.  
© BOBST SA 2023  
BUPC-RS5003-EN-062023

# Qualitative, cost effective, and **sustainable** production

[WWW.BOBST.COM/RS5003PLATFORM](http://WWW.BOBST.COM/RS5003PLATFORM)



## RS 5003 platform

- > At a glance
- > Packaging market
- > Benefits and features
  - > 1 - 3
  - > 4 - 5
- > Specifications
  - > Measurements
  - > Technical information
- > Related products
- > Services
  - > General services
  - > BOBST Connect

**REQUEST  
CONSULTING**

 Print responsibly

Data is not binding.  
Non-contractual pictures.  
The manufacturer reserves  
the right to make  
modifications without notice.  
© BOBST SA 2023  
BUPC-RS5003-EN-062023